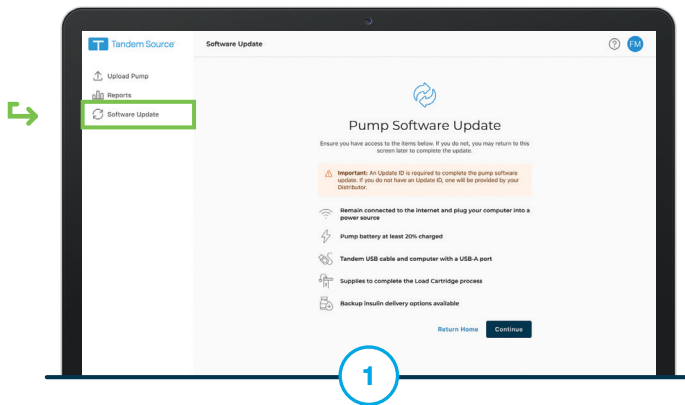
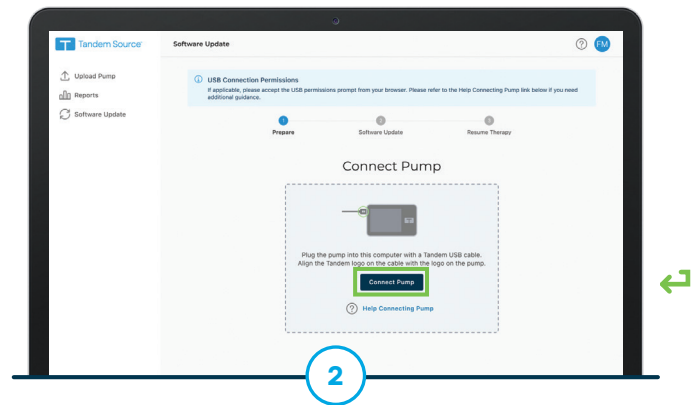


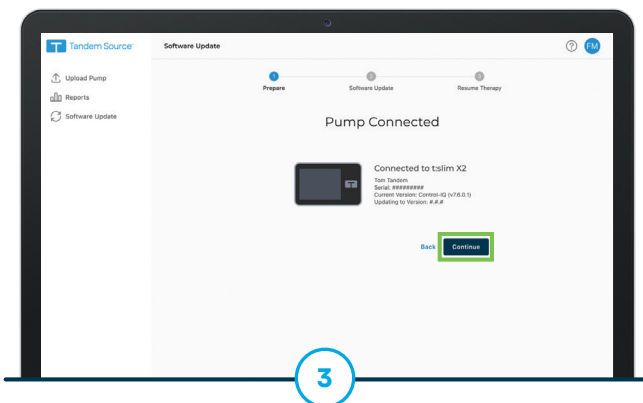
These instructions will show users how to remotely update their t:slim X2 insulin pump with new features.



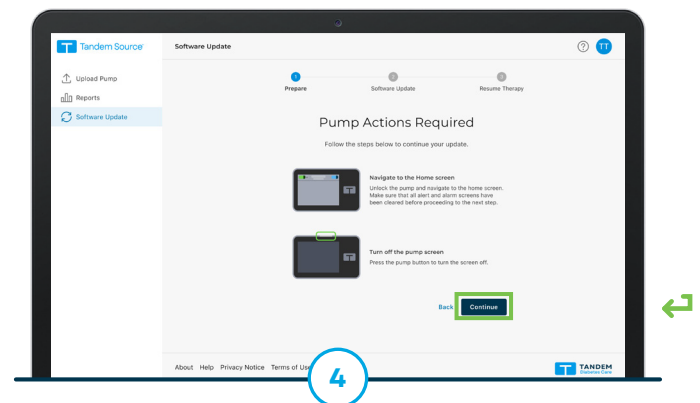
Log in to the Tandem Source platform. Select **Software Update** from the Navigation sidebar. Click **Continue** after reviewing the update requirements and safety information.



Connect the micro-USB end of the USB cable provided by Tandem Diabetes Care to the insulin pump and connect the other end to a USB port on the user's computer. Click **Connect Pump**.



A Pump Connected screen will appear if the connection is successful. Confirm the pump serial number is accurate before clicking **Continue**.

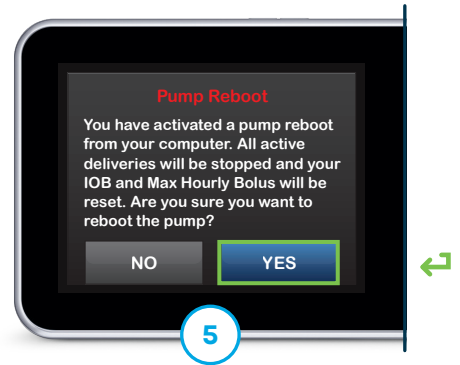


Unlock the pump and navigate to the Home screen. Press the Pump button to turn the screen off. Click **Continue**.

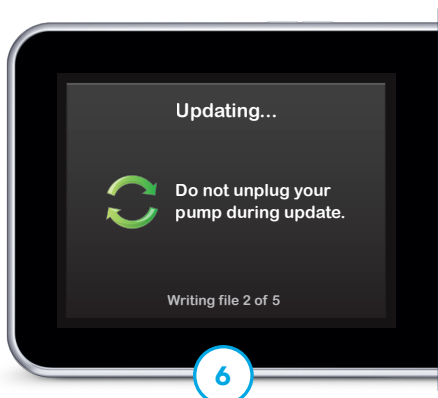
ALWAYS READ THE LABEL AND FOLLOW THE DIRECTIONS FOR USE. Read the warnings available on amsdiabetes.com.au/resources before purchasing. Consult your healthcare professional to see which product is right for you.



Continue to follow the on-screen instructions within Tandem Source and complete any required actions on your t:slim X2 pump.




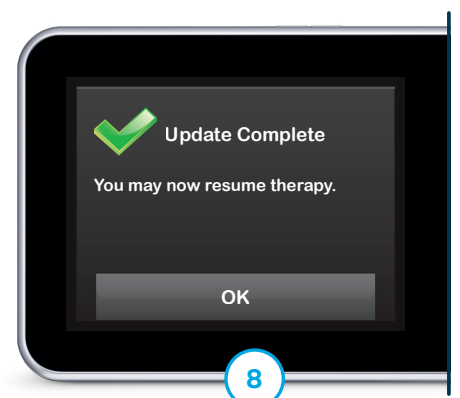
A Pump Reboot screen appears. Tap **Yes** to begin the reboot and confirm that insulin deliveries will be stopped.



The software update begins. Do not disconnect from the Internet or unplug the pump from the computer during this process.

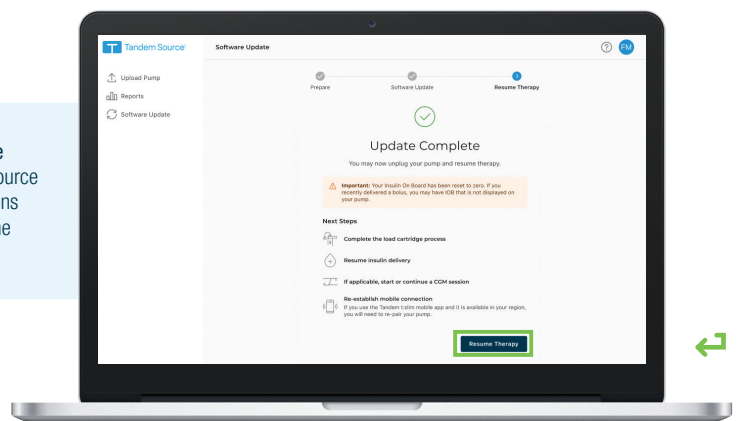


Using the keypad on the pump, enter the Update ID again and tap  to continue.



The update is complete.

Note: Click **Resume Therapy** on Tandem Source for additional instructions on how to safely resume insulin delivery.



1300 851 056
au.enquiries@dexcom.com

amsldiabetes.com.au



The t:slim X2 insulin pump is a portable insulin infusion pump, including sterile cartridge, that delivers insulin subcutaneously through a disposable infusion set. Infusion pump, insulin, ambulatory: a portable insulin infusion pump, including sterile cartridge, that delivers insulin subcutaneously through a disposable infusion set. Tandem Source is a web application intended to support glucose management through the display and analysis of information uploaded from Tandem insulin pumps. **Safety info:** tandemdiabetes.com/en-au/legal/important-safety-information. © 2026 Tandem Diabetes Care, Inc. All rights reserved. Tandem Diabetes Care, Control-IQ, and t:slim X2 are registered trademarks or trademarks of Tandem Diabetes Care, Inc. Australasian Medical & Scientific Limited is a Dexcom company. MAT-0100_3 PR-AU-015 February 2026